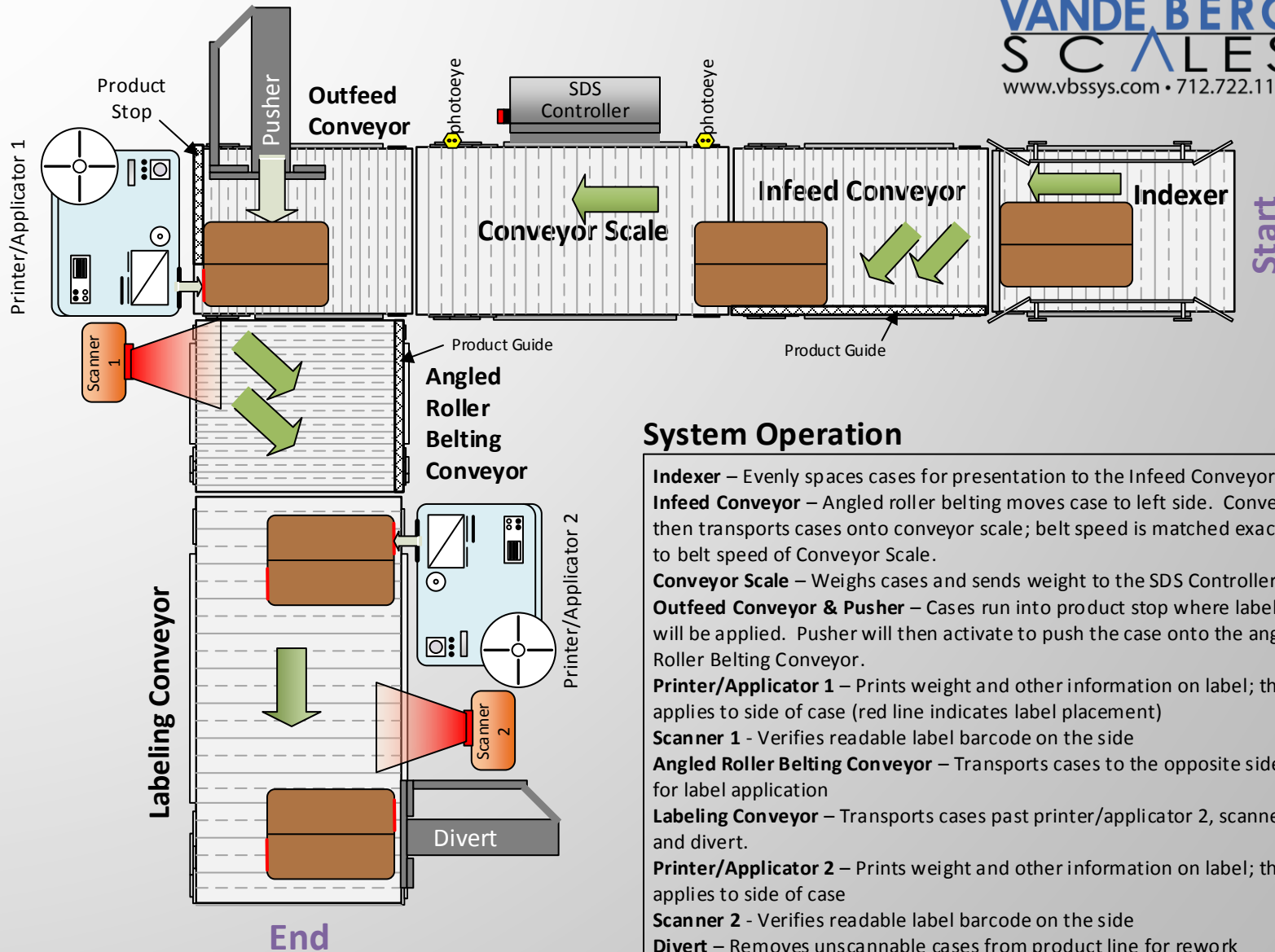


Automatic Case Weighing & Labeling System

VANDE BERG
S C A L E S
 www.vbssys.com • 712.722.1181



System Operation

- Indexer** – Evenly spaces cases for presentation to the Infeed Conveyor
- Infeed Conveyor** – Angled roller belting moves case to left side. Conveyor then transports cases onto conveyor scale; belt speed is matched exactly to belt speed of Conveyor Scale.
- Conveyor Scale** – Weighs cases and sends weight to the SDS Controller
- Outfeed Conveyor & Pusher** – Cases run into product stop where label will be applied. Pusher will then activate to push the case onto the angled Roller Belting Conveyor.
- Printer/Applicator 1** – Prints weight and other information on label; then applies to side of case (red line indicates label placement)
- Scanner 1** - Verifies readable label barcode on the side
- Angled Roller Belting Conveyor** – Transports cases to the opposite side for label application
- Labeling Conveyor** – Transports cases past printer/applicator 2, scanner 2 and divert.
- Printer/Applicator 2** – Prints weight and other information on label; then applies to side of case
- Scanner 2** - Verifies readable label barcode on the side
- Divert** – Removes unscannable cases from product line for rework