

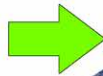
# Top & Bottom Labeling

Finding nickels & dimes in better yield design

## Washdown-Capable Top/Bottom Labeling System

Our Top and Bottom Labeling Systems provide automatic, precise label placement without the need for costly manual labor. Label information can be preprinted on the label or can be printed during the labeling process.

We build a label applicator unit that is completely adjustable, so that label rolls can be changed quickly and easily regardless of the type of product or how often production runs change throughout each shift.



Washdown-Rated Top and Bottom Labeler (optional controller model shown)

### Applications:

- Case-ready trays
- Shrink-wrapped product
- Cryovac-ed® product
- Packaged fruits/vegetables
- Cheese/Dairy product
- Various food products
- Customized applications



### Features and Benefits

- Completely washdown compatible – an industry first
- Rigid 304 stainless steel construction
- Lower operating cost than most existing labelers on the market
- Industry leading speeds and capacities
- Built from easily available standard components
- Easy product setup with 17-inch touchscreen HMI
- Low cost of ownership over the life of the unit



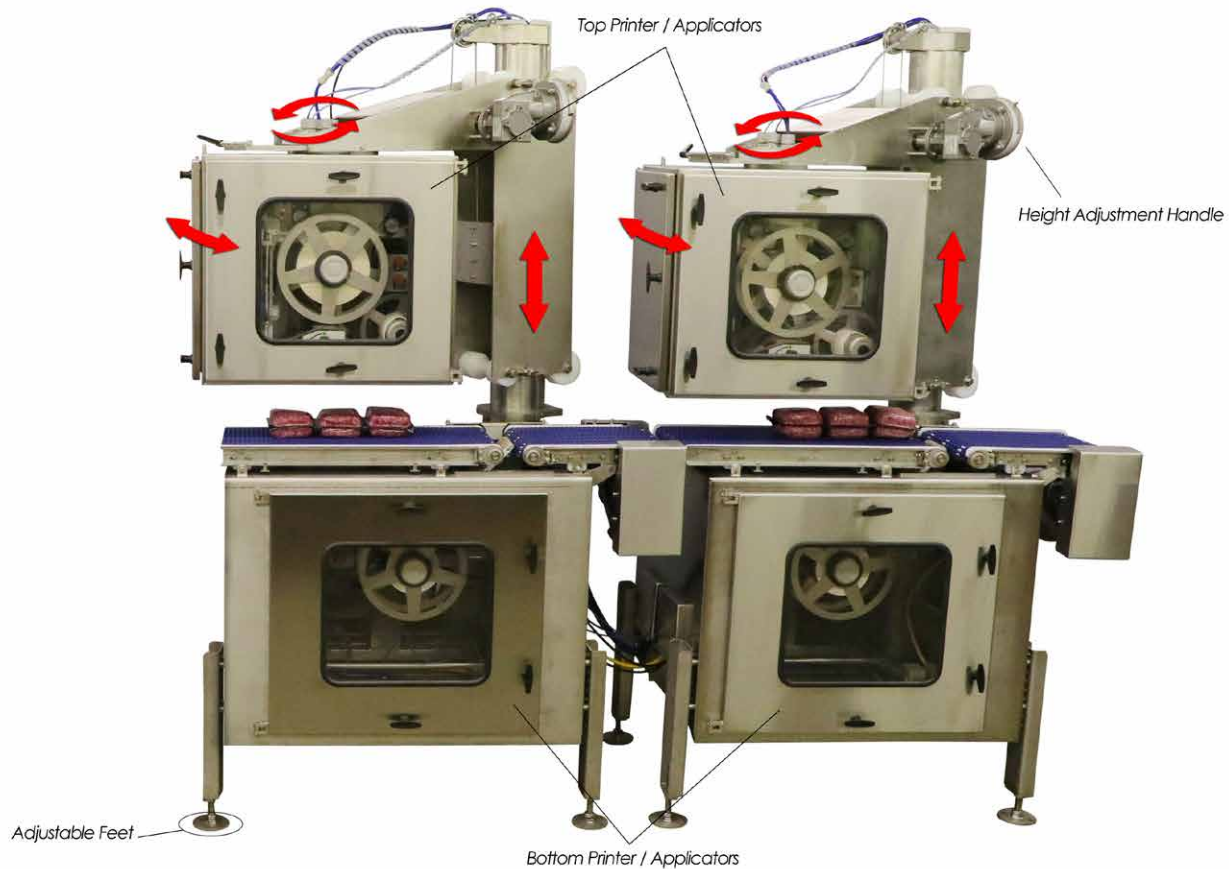
Labels are applied to both the top and bottom of product.



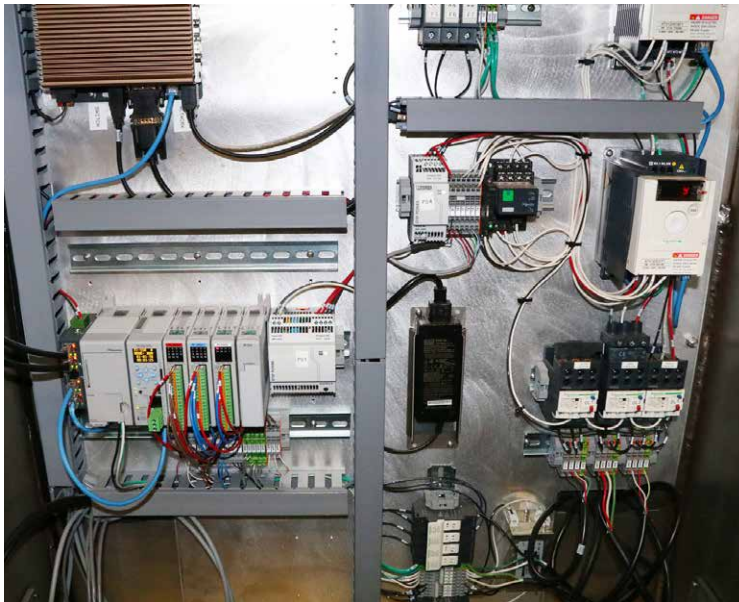
**VANDEBERG**  
**SCALES**  
Division of VBS, Inc.

# Washdown-Capable Top & Bottom Labeler

Two Top / Two Bottom : Maximum Adjustability

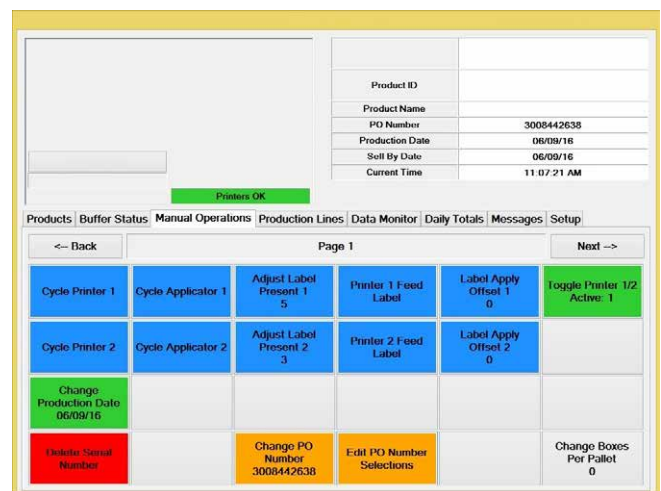


Top and Bottom Labeler with redundant applicators permit label roll change-out while line is still operating.



Our straightforward electronic controls make troubleshooting effortless and the obvious choice over our competitors.

## Internal Features

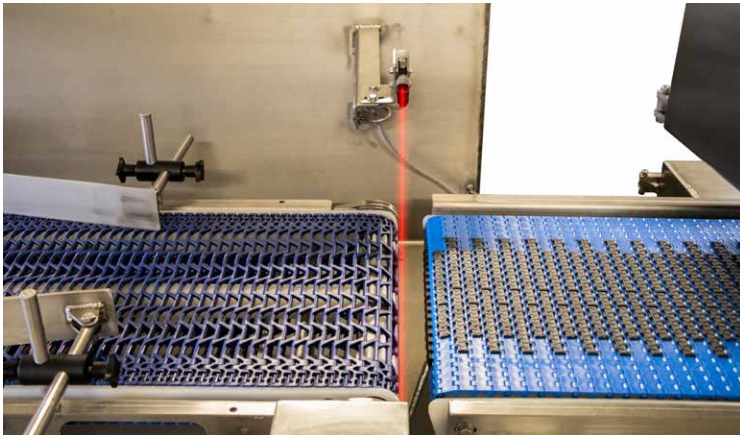


Intuitive HMI touchscreen allows for minimal training and easy operation with customizable maintenance/operational hot keys. (Weighing option removed from program).

**A Top/Bottom Labeler can save a significant amount of labor in labeling packages. Packages can be automatically spaced, aligned, and labeled.**



# Innovative Design Features



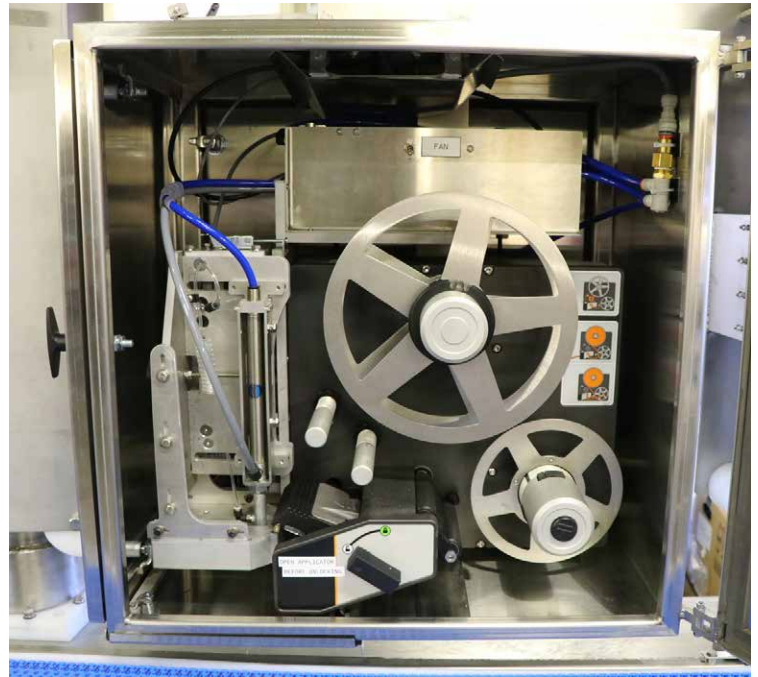
*Photoeye is triggered when product breaks the beam (simulated), starting the package tracking process for precise label application.*



*Bottom labeler raises and lowers pneumatically to store for washdown. (Cover must be secured for washdown).*

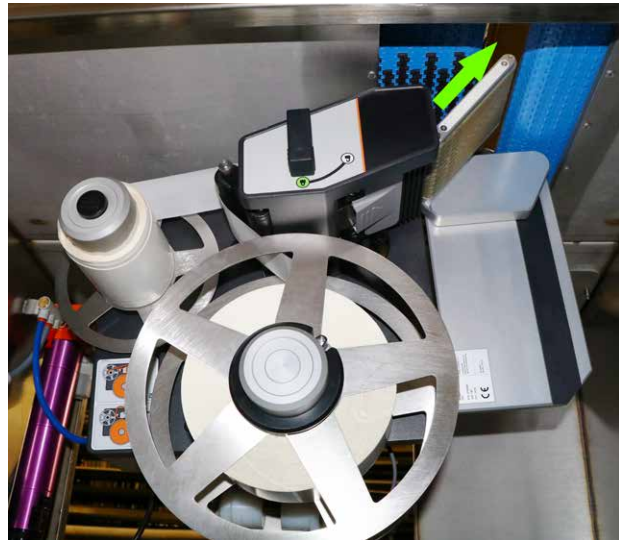


*Washdown cover for top applicator.*



*The majority of our labeling systems are outfitted with an applicator that applies labels with high speed and precision to the base and/or top of packages.*

*Large doors permit easy access to service to the printer components as well as easily replaceable label stock. Additionally, changing label stock does not require special tools.*



*Labels protrude between two conveyors for bottom label application.*



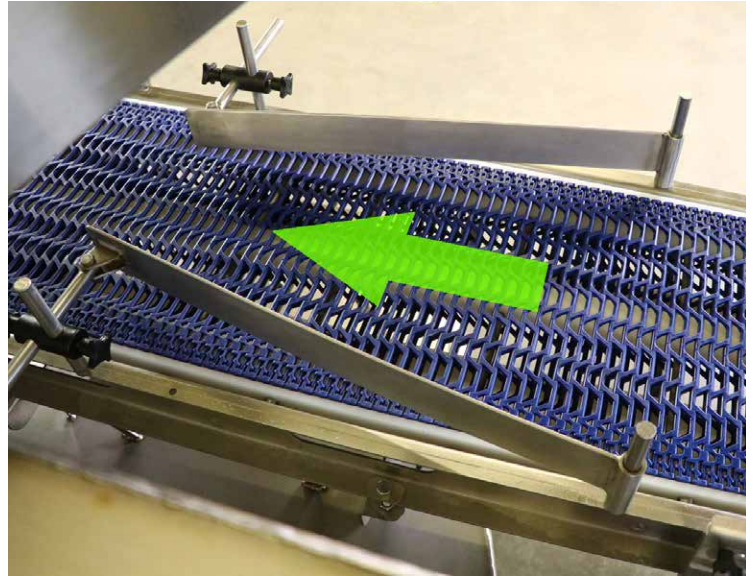
*Rubberized texture of the grip belting keeps product steady through the labeling process.*



# Additional Features



Optional controller swing arm can be easily adjusted side-to-side or tilted up/down to an ergonomic position to accommodate virtually anyone.



Adjustable stainless steel guides direct product for label application.



Built tough: scan this 2D barcode to see a short video on breaking a 2x4 over our labeling system.

## Additional Features and Benefits

- Can be integrated into a production line or used as a stand-alone machine
- Easily setup hotkeys for common products (up to 200 are possible)
- Remote troubleshooting via Ethernet

## Labeler Specifications

- Construction: Heavy-gauge 3/16" 304 Stainless Steel Plate
- Interface: 17-inch HMI Color Touchscreen
- Controller: Embedded OS
- Label Preview: WYSIWYG editor
- Data Export: Configurable (i.e. - SQL, .xls, .csv)
- Communication: Ethernet TCP/IP, RS-232, RS-485/RS-422

Look up our YouTube channel  
[youtube.com/vbsmarketing](http://youtube.com/vbsmarketing)  
or scan this code:



Scan this 2D barcode to see a video on  
our top & bottom labeling systems



## No parts pricing sucker punches!



We use standard, industry-available components that are often easily attainable from multiple vendors, in the design and construction of our equipment assuring our customer economical, simplified, fast and efficient maintainability.



**VANDE BERG**  
**S C A L E S**  
Division of VBS, Inc.

770 7th St NW • Sioux Center, IA 51250  
Fax 712.722.0900 • 712.722.1181  
[info@vbssys.com](mailto:info@vbssys.com) • [www.vbssys.com](http://www.vbssys.com)