

Automatic Box Labeling

Finding nickels & dimes in better yield design

Labeling systems designed for functionality and repeatability!

We offer a complete automatic weighing/labeling system that requires minimal oversight. Our systems can label boxes on the front, side, back, top, bottom or even apply a corner-wrap.

Features & Benefits

- Reduce hand-labeling to save money, time and labor
- Label is applied evenly which improves product appearance
- Consistently applied labels reduce barcode reading errors
- Label editing software allows you to have control over the look of your label
- Simplifies your compliance labeling requirements

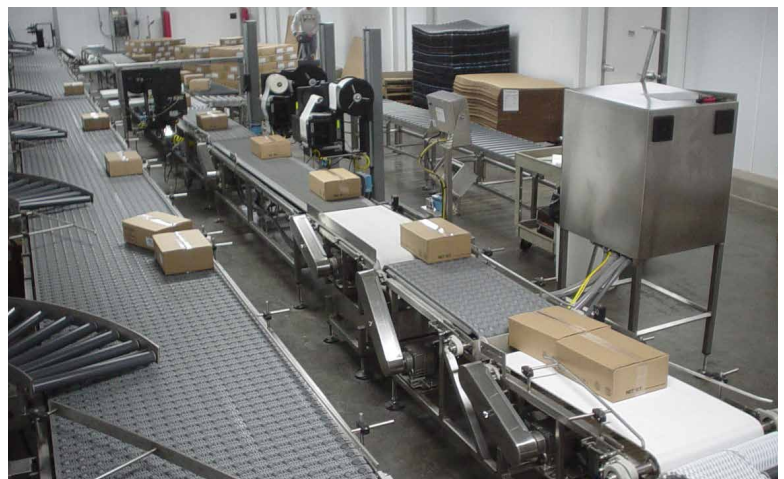


Automatic box labeling system which includes indexing, aligning, label application, database generation and barcode verification.

Imagine a single worker precisely applying 20,000 labels on 10,000 boxes in a single shift – our system can do that.



Example of software interface with colored hot-keys for quick label selection and printing.



The center of the image shows three automatic box weigh labelers in a warehousing facility.

VANDEBERG
SCALES
Division of VBS, Inc.



This scanner (blue), is mounted in a NEMA 4x enclosure. Heavy duty frame construction reduces vibrations, thereby improving scanner reliability.



Our 17" touchscreen HMI display functions as the brains of the system. All data is stored in an SQL database for remote retrieval via an Ethernet connection.



After a box is weighed, a preprinted/branding label (orange) will be applied. The label will be scanned to ensure proper application (yellow). Next a barcode label will be applied (green) and finally a barcode scanner (blue) will ensure proper barcode label application.

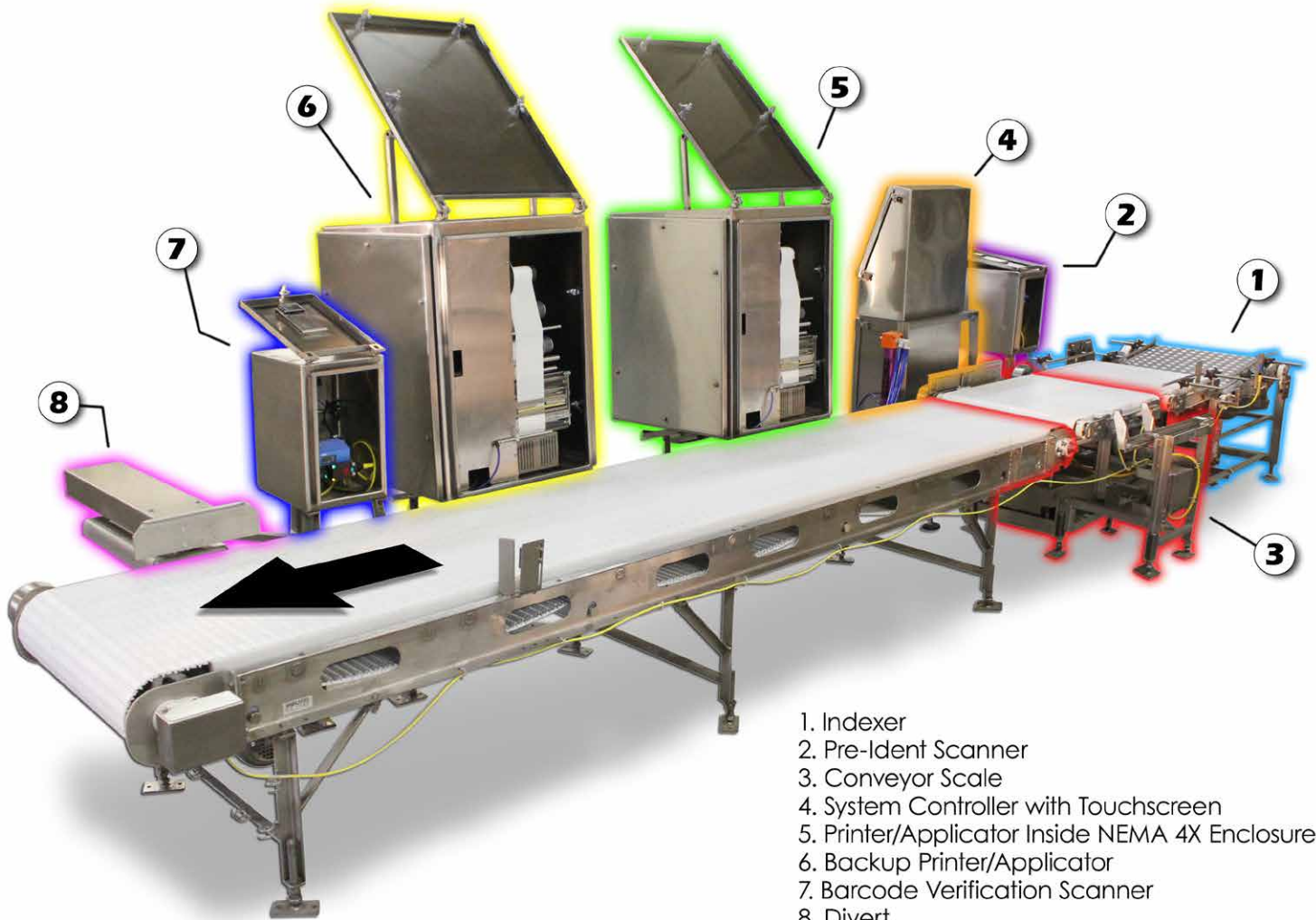


The corner-wrap applicator arm completes the application of the label to the case.

4 ways you can use Automatic Box Labeling Machines

1. Apply labels on front, side, back, top, bottom or corner-wrap
2. Apply preprinted labels
3. Gather weight information to be printed on labels
4. Take your information, combine it with ours (i.e. weight) and print it on one label

Washdown Automatic Tote/Case Labeler



1. Indexer
2. Pre-Ident Scanner
3. Conveyor Scale
4. System Controller with Touchscreen
5. Printer/Applicator Inside NEMA 4X Enclosure
6. Backup Printer/Applicator
7. Barcode Verification Scanner
8. Divert

We can label the following:

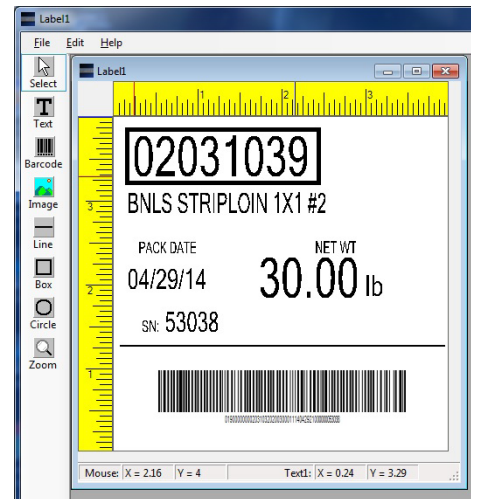
- Boxes of virtually any size
- Cases
- Totes
- Cartons
- Jugs
- Round Containers
- Pallets
- Trays

The system above does the following:

- Evenly spaces boxes (1)
- Scans a pre-ident barcode (2)
- Weighs each box/tote (3)
- Stores the weight (4)
- Printer/applicator (5)
- Backup printer/applicator (6)
- Scans the barcode for inventory count (7)
- Rejects boxes that are out of weight range or don't have a label (8)



Compact washdown-rated labeling system for boxes or totes with a 90° direction change.



Software permits virtually limitless customization of label format.

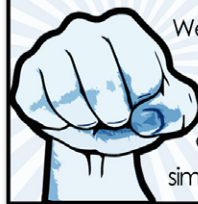


Plastic totes (of different heights) being labeled on the top. The system scans the height of the tote and adjusts the applicator arm accordingly.



Our box labeling system can print simple to complex labels as well as various shapes and logos.

No parts pricing sucker punches!



We use standard, industry-available components that are often easily attainable from multiple vendors, in the design and construction of our equipment assuring our customer economical, simplified, fast and efficient maintainability.

Optional Equipment:

- Lost data collection
- Diverts
- NEMA 4X enclosures
- Custom stainless steel stands
- Custom conveyors



You Want It, We'll Make It.



VANDEBERG SCALES

Division of VBS, Inc.

770 7th St NW • Sioux Center, IA 51250
Fax 712.722.0900 • 712.722.1181
info@vbssys.com • www.vbssys.com

071222.03



Scan this 2D barcode for more information from our website on automatic box labeling!