

WEIGHMORE[®] In-Motion Monorails

High Accuracy In-Motion Monorail Scales

Finding nickels & dimes in better yield design



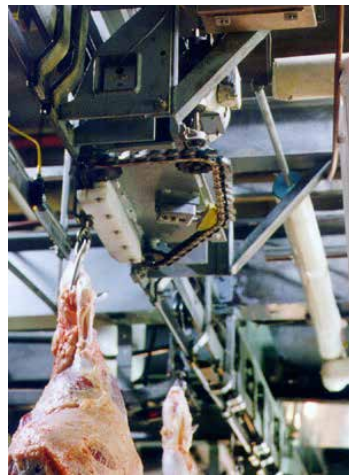
We Set the Industry Standard for In-Motion Monorail Scale Accuracy!

Our High-Accuracy In-Motion (Dynamic) Monorail Scale is the most cost-effective system available when comparing the reduced costs of installation and then the resulting accuracy in operation of the monorail.

We make the most accurate legal-for-trade in-motion monorail scale available in the weighing industry today.



Stainless Steel In-Motion Monorail Scale



A beef side is weighed in motion across our in-motion monorail scale



Whole hog carcasses are weighed using our monorail scale.



Benefits

- Exceptionally high accuracy ensuring you don't give away product
- Unique transition rail that gradually loads weight onto live scale, reducing weight oscillations
- Unique chain conveyor mechanism cancels out trolley rolling and push-dog problems
- Easy installation compared to other units
- Manufactured from stainless steel for harsh environments resulting in incredible reliability
- Long-life, heavy duty push-finger dog chain powers the trolley away from the plant push dog without carrying the load of the trolley as compared against competitors high wear chain designs

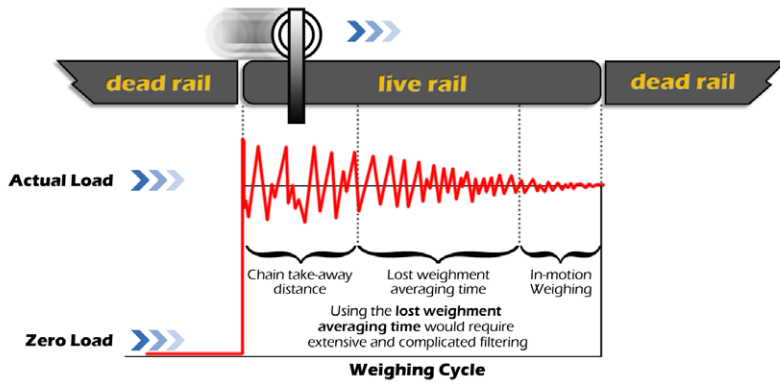
VANDE BERG S C A L E S

Division of VBS, Inc.

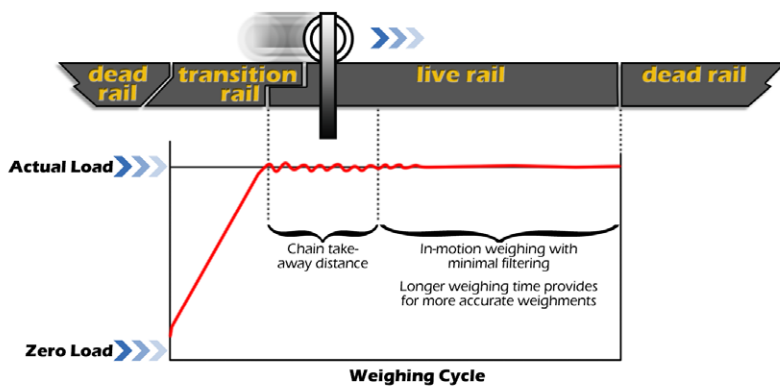
770 7th St NW • Sioux Center, IA 51250
Fax 712.722.0900 • 712.722.1181
info@vbssys.com • www.vbssys.com

Traditional Loading VS. Shock Loading

Weighing Cycle on Competitor's Monorail



Weighing Cycle on Vande Berg Scale's Monorail Scale



A Vande Berg Scales WeighMore® In-Motion Monorail Scale uses a transition rail and conveyor mechanism that virtually eliminates the shock loading of more conventional designs.



Stainless Steel with horizontal motor position (optional)

Our 750-lb scale is the heaviest capacity in the industry while still equaling the 0.2-lb division size, which is the smallest in the industry. Approved for chain speeds ranging from 45 drafts/hour (lowest in the industry) up to 2,150 drafts/hour (highest in the industry).



Standard Stainless Steel In-Motion Monorail Scale (reverse) - Drip pan prevents chain oil from dripping onto carcasses below.

Applications:

- Pork Carcass
- Beef Sides
- Veal Carasses
- Kosher Plants
- Lamb Carcass
- Hot, cold, hot box, grading hall, hot fat trim, sales cooler, transfer scale weighing
- Yield Control tracking advantages

Features:

- NTEP approved Scale (COC# 97-005) ensuring compliance with best practices
- Dual load cell design allows smallest possible scale divisions based on NTEP approved load cells
- Load cells are enclosed in a stainless steel tube and sealed to repel moisture
- Weight indication system included for system accuracy
- Minimal filtering necessary

CONFIGURABLE-DESIGN

You Want It, We'll Make It.



VANDE BERG
S C A L E S

Division of VBS, Inc.

770 7th St NW • Sioux Center, IA 51250
Fax 712.722.0900 • 712.722.1181
info@vbssys.com • www.vbssys.com

083115.12