

# Custom-Fabricated Stainless Steel Enclosures

Finding nickels & dimes in better yield design

Vande Berg Scales manufactures NEMA-4X stainless steel enclosures for the protection of electronic equipment in harsh work environments. Reduce your down time by keeping your electronics dry and running reliably.



*Dual compartment enclosure*



*Printer enclosure with pull-out drawers for convenience & accessibility to your equipment.*

**14 Gauge  
stainless steel!**



*Printer enclosure with stand*



## Enclosure Features:

- Continuous TIG welded construction of polished 304 stainless steel assures robust characteristics for longevity
- Washdown, rain gutter style door seals prevent direct spray from water ingress
- Single ½-turn easy-to-operate door latch allows operators to quickly and easily open the door
- Pull out drawers designed for quick access for label roll changes and equipment access
- Hinged doors allows door to swing nearly 270° to relieve the operator from door obstructions while in use

"The stainless steel enclosures we ordered were on spec, came in a timely fashion, and work great! This makes nearly 20 enclosures we have purchased from VBS in the last two years and are very pleased with the craftsmanship, quality and performance. If we have a special need, VBS is there to help solve our problem."

**Jeffrey B. | Waterloo, IA**

**Completely Customizable Enclosures!**



**VANDE BERG**  
**S C A L E S**  
Division of VBS, Inc.

## Printer Enclosures



*Printer enclosure with label door*



*Printer enclosure on stand with slide out drawer and sealed cord access*



*Printer enclosure with pull-out drawer*

## Monitor Enclosures



*Touchscreen & embedded controller enclosure*



*Indicator box in a box*



*Enclosure for monitor with wall-mount tabs*

## Mobile Carts



*Dual enclosure cart with roller-top bench scale*



*Portable manual box labeler*



*Portable manual box labeling system utilizing a side opening enclosure*



*Enclosure cart with work surface*

## Large Cabinets



*Tall storage enclosure with view window*



*Large enclosure with 270° swing doors and multiple compartments*



*Tall storage enclosure*



*Tall storage enclosure with multiple slide-out shelves*



# Vital Design Elements



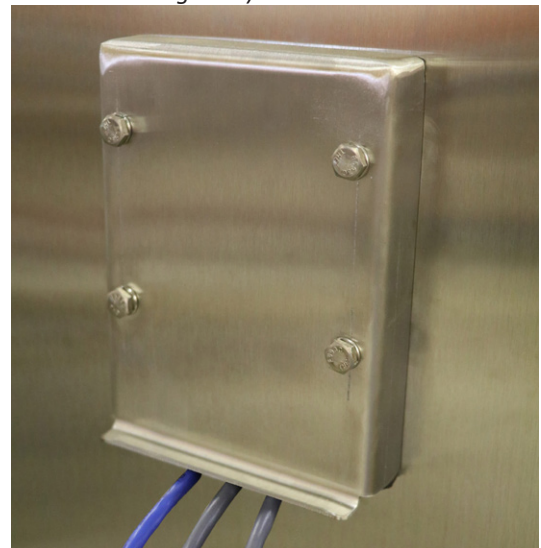
*A sloped top allows water to run off of the enclosure and not pool.*



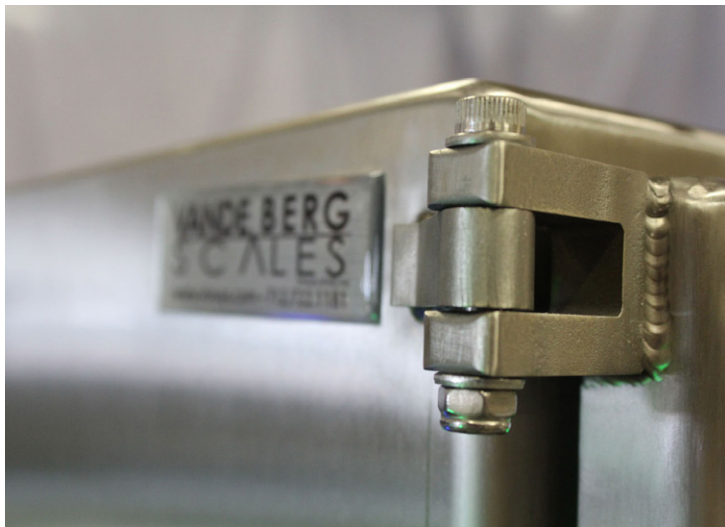
*Several handles along the door edge ensure positive pressure along the entire edge of the door or access panel. (Even the handle has an internal gasket).*



*Our "rain gutter" style construction prevents a high pressure water stream from achieving a "direct shot" at the door seal. It acts as a deflector for the high pressure water when the door is closed.*



*Power cord/cable entry allows you the advantage of wiring your enclosure without having to cut and splice your cables. The cables are sandwiched between multiple layers of closed-cell foam for a water-tight seal.*



*Double-shear point external hinges allow the door to make an even seal around the entire outside edge vs. internal hinges which often have reduced seal material in the vicinity of the hinge.*



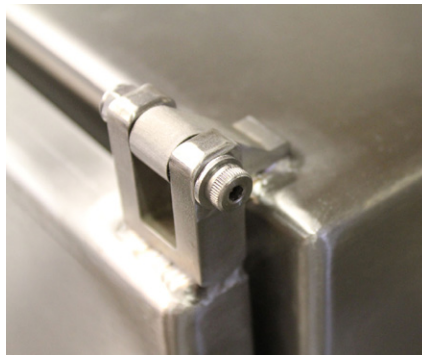
*Most of our enclosures use a 1-inch wide x 0.25-inch thick gasket. This ensures a continuous seal even if door alignment starts to deviate over years of use.*



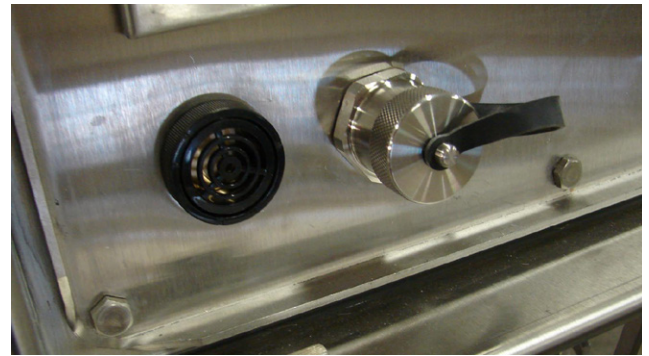
# Options



Key locking door handle



Hinges can be mounted on any side of the enclosure



External communications port



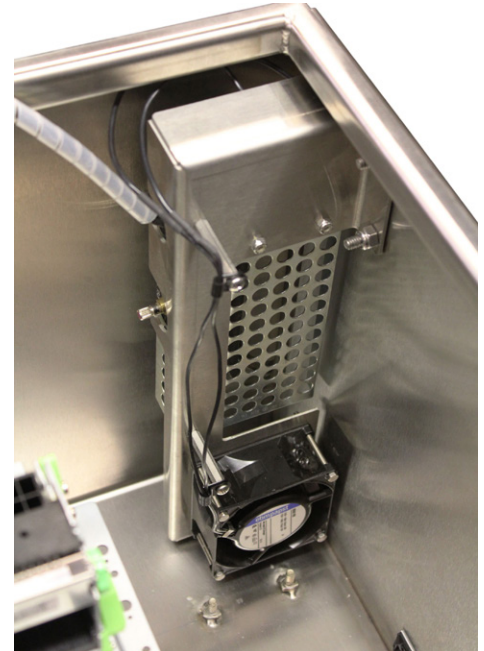
External flanges allow components (i.e. light bars, antennas) to be connected to the flange vs. securing the component directly to the enclosure, which would require drilling holes and creating a potential water entry point.



Wall mounting brackets allow for attaching our enclosure to a wall or other surface.



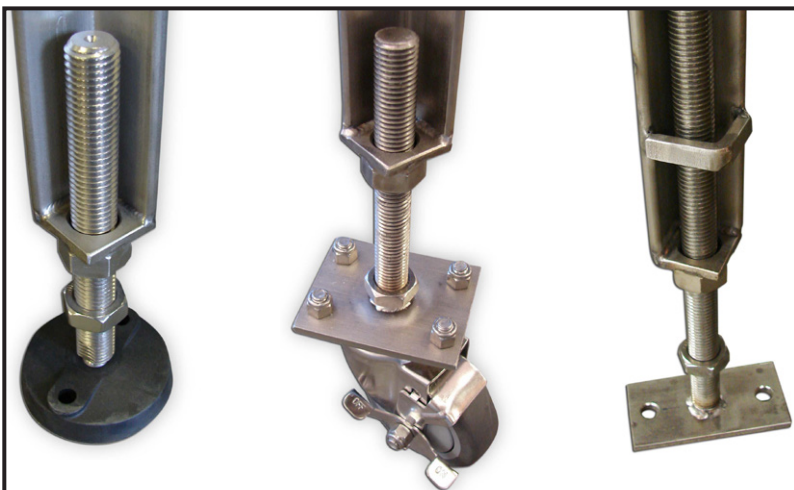
Plexi-glass window in door



Internal heaters can be installed to keep printer label stock warm.

## More Options:

- Hinges mounted on any side
- Closeable door slot access
- Can be mounted on stainless steel carts or stands
- Stainless steel shelves and dividers



Variety of options for feet



Scan this 2D barcode to see more enclosures on our website!

**VANDE BERG**  
**S C A L E S**  
Division of VBS, Inc.

770 7th St NW • Sioux Center, IA 51250  
Fax 712.722.0900 • 712.722.1181  
info@vbssys.com • www.vbssys.com

101321.05